



**Four Divisions, One Purpose.  
People Delivering Expertise.**



# BRING YOUR AMBITION TO LIFE

With over 175 years of heritage, H&J Martin Group delivers high-end Fit Out, Facilities Management, Bespoke Joinery, and Fire & Security services across the UK and Ireland.

From our seven regional offices, we self-deliver through four expert divisions, ensuring control, consistency, and quality at every stage.

Our approach is collaborative, our delivery is precise, and our commitment to sustainability and social responsibility is embedded in everything we do.

We don't just build spaces — we build trust.



Our team will work tirelessly to deliver our clients' needs. I'm proud to be leading an organisation which seeks excellence every step of the way.



Kieron Millar  
Managing Director, H&J Martin Group

# SECTORS WE WORK IN



LEISURE



PUBLIC SECTOR



HOSPITALITY



FOOD AND BEVERAGE



RETAIL



CORPORATE



HEALTHCARE



RESIDENTIAL

**IMPRESS  
YOURSELF**

## THE H&J MARTIN GROUP DIFFERENCE



### **Unmatched Expertise**

With a legacy of excellence, H&J Martin Group leads across multiple sectors, bringing deep knowledge and proven skill to every project we undertake.

### **Enduring Experience**

Backed by over 175 years of industry heritage, we blend time-tested practices with forward-thinking innovation to meet the evolving needs of our clients.

### **Exceptional Quality**

Our highly skilled professionals deliver outstanding results, ensuring superior outcomes in every aspect of our work.

### **Comprehensive Solutions**

From start to finish, we provide an all-in-one service with in-house capabilities handled by our dedicated, expertly trained team.

### **Client-Centred Flexibility**

We adapt to your unique needs, working within your budget and requirements to deliver tailored, effective solutions.



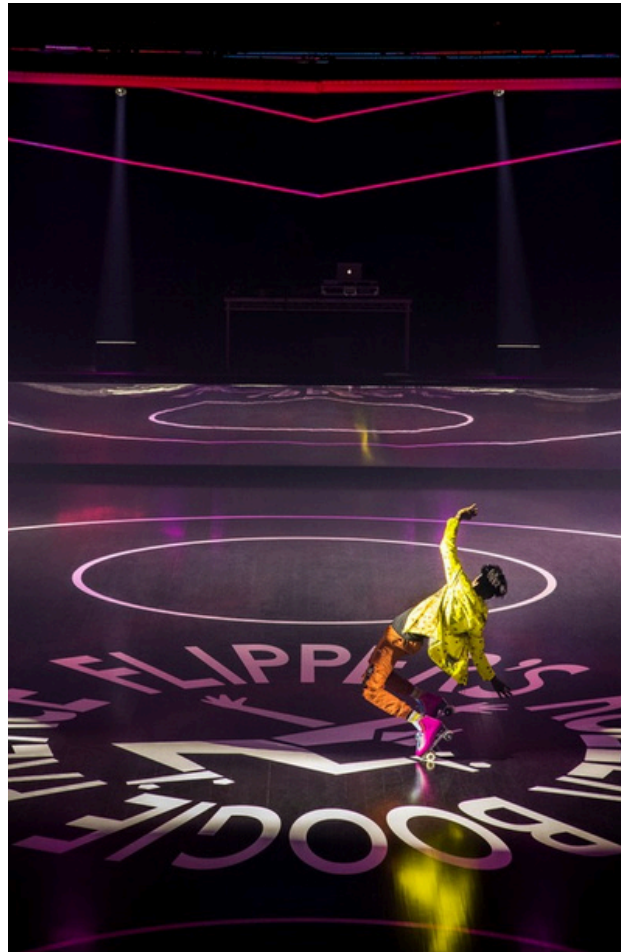
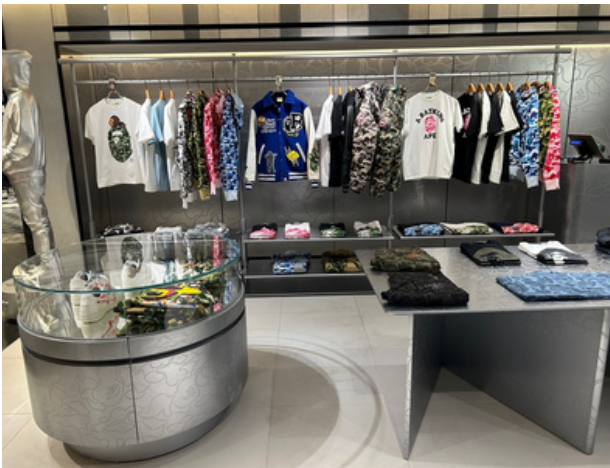
# OUR CLIENTS

# AWARDS AND RECOGNITION



# FIT OUT

---



H&J Martin Fit Out specialises in the construction, refurbishment, and fit out of retail, commercial, hospitality, leisure, education, and high-end residential projects across the UK and Ireland. We build lasting partnerships through a collaborative approach and a commitment to delivering high-quality spaces with speed, agility, and minimal disruption.

Our experienced team works closely with clients to understand their unique requirements, ensuring every project is completed safely, on time, and to the highest standards. With a proven track record across sectors — from flagship retail stores and boutique hotels to educational facilities and luxury residences — we consistently deliver tailored solutions that exceed expectations.

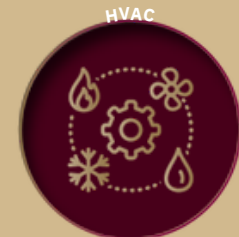
Leveraging our in-house resources, including specialist plant and equipment, we create added value and cost efficiencies while maintaining full control over quality and delivery.

# FACILITIES MANAGEMENT

H&J Martin Facilities Management provides comprehensive minor works, planned maintenance, and reactive support across the UK and Ireland. We serve a diverse range of clients in both the public and private sectors, ensuring operational efficiency, safety, and comfort in every environment.

Our extensive experience allows us to apply best practice methodologies and cutting-edge technologies to manage critical facilities. Through a proven approach that includes a responsive Helpdesk, advanced IT systems, mobile workforce solutions, and robust document management, we consistently deliver high-quality service and remain ahead of industry standards.

We pride ourselves on our ability to self-deliver a wide range of specialist services using directly employed, skilled professionals. Our expertise spans building, mechanical, and electrical services, with in-house capabilities in fire and security systems, HVAC, door and gate automation, telecommunications, and renewable energy solutions.



# ELMWOOD PROTECTION SERVICES



**ELMWOOD**  
PROTECTION SERVICES

Elmwood Protection Services is a leading provider of comprehensive fire, security, and access solutions. Respected and led by industry experts, we offer a full range of services across fire protection, security systems, doors, and gates.

Our commitment to excellence in service provision ensures that we deliver first-class service to our clients.

Our reputation for delivering tailored solutions and first-class service has made us a trusted name in the industry.



**TOTAL  
SAFETY**

**TOTAL  
SECURITY**

**TOTAL  
CONFIDENCE**

# ROSEWOOD BESPOKE JOINERY

---



**ROSEWOOD**  
BESPOKE JOINERY

**Our mission is to blend artistry with craftsmanship, creating tailored solutions that enhance both functionality and aesthetics in any space.**



Our team is driven by a shared commitment to excellence, combining traditional skill with modern precision to bring unique visions to life. Already trusted by world-renowned brands, we take pride in our ability to deliver exceptional results on every project, no matter the scale or complexity.

At Rosewood Bespoke Joinery, we believe in more than just making beautiful spaces — we believe in making a difference. Whether it's through the quality of our work or our contribution to the community and beyond, we're building something that lasts.

# CLIENT RELATIONSHIPS THAT LAST

We're proud to be trusted partners to our clients. But don't take our word for it. Here's what our clients had to say.

## Chris Thomas

**Project and Properties Manager,  
Aspire Lounges**

Construction works completed by H&J Martin leading a dedicated team to keep the schedule and opening on time. A massive thanks for allowing this to happen. The airport now has a brilliant lounge which will be enjoyed by many guests over the years.

## John Woodward

**Senior Project  
Manager, PureGym**

We have developed a strong relationship with the H&J Martin Fit Out teams for multiple projects across UK and NI. We know we can rely on them to complete work to a high standard with the right level of attention to detail.

## Max Rose

**Head of  
Construction  
Rituals**

It's been a pleasure to work with the team at H&J Martin. We trust them to deliver stores which our customers can instantly enjoy, keeping to our brand standards.

## Cyprien Brochard

**General Manager,  
Imoxis**

Working with Rosewood Bespoke Joinery on our new serviced office building was a fantastic experience. From the reception desk to the breakout and dining areas, every detail was thoughtfully crafted and beautifully finished. The team brought real design insight and craftsmanship to the project, and the final result has transformed the space — it's the first thing people comment on when they walk in.

## Neill Weir

**Danske Bank**

We work with Elmwood Protection Services for our fire and security needs and have never looked back. The team is diligent and knowledgeable — true experts in their field. In finance, security is crucial, and I know we are in good hands with Elmwood.



# H M A Z O O

# SS

We'd love to hear from you.

**Kieron Millar**

**Managing Director**

M: +44 78 6043 9356

E: [kieron.millar@hjmartin.co.uk](mailto:kieron.millar@hjmartin.co.uk)

**Peter Hamlin**

**Commercial Director, Fit Out**

M: +44 77 6914 5730

E: [peter.hamlin@hjmartin.co.uk](mailto:peter.hamlin@hjmartin.co.uk)

## Headquarters

BELFAST  
Rosemount House  
21-23 Sydenham Road  
Belfast, Northern Ireland  
BT3 9HA

+44 (0)28 9045 5531

## Our offices

LONDON  
DUBLIN  
EDINBURGH  
MANCHESTER  
PORTADOWN  
COOKSTOWN